



DK SPEC

NG⁴

High performance planer head

PERFORMANCE

One screw per pocket for uniform clamping on all knives

Designed for flat or corrugated knives

Mechanically locked at 100%

Quick and easy setup

More knives per head

9" CC = 20 knives

14" CC = 34 knives

16" CC = 40 knives

17 1/8" CC = 44 knives

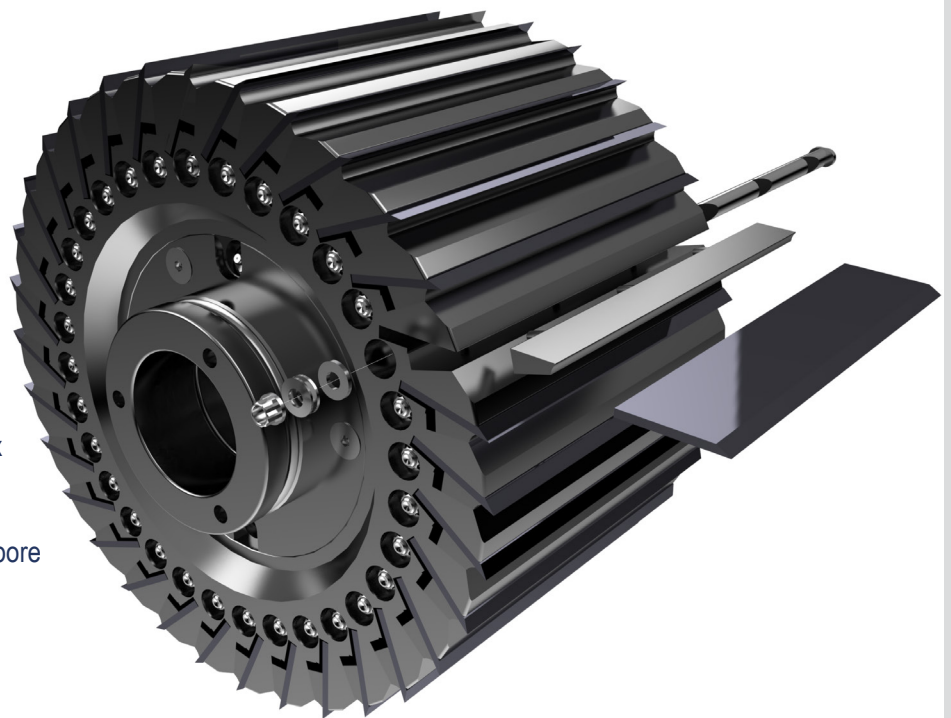
Engineered to grind knives on the Filex

Designed for high speed planers

Compatible with hydro lock cylindrical bore

SAFETY

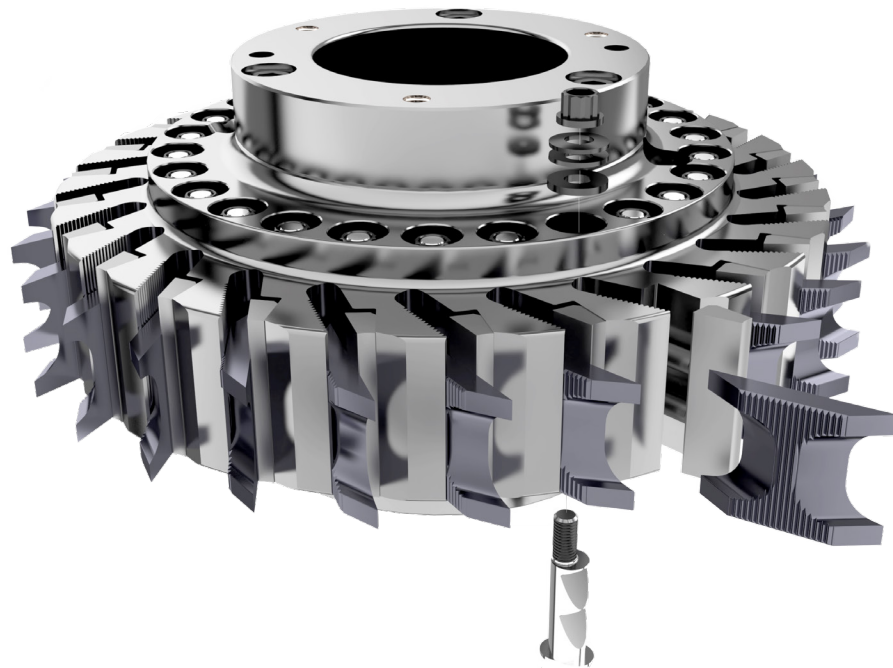
SECURITY



1060, chemin Olivier
Lévis (Québec) G7A 2M7

1.888.686.3847
www.dkspec.com

Version: 20240901



DK SPEC

TECHNOLOGIE ET CONCEPTION NOVATRICES

www.dkspec.com